



MECHANICAL SCREEN

BOK provides a great solution for mechanical screening at ground levels or roof tops. BOK mechanical screens can be mounted in some instances without posts or mounted horizontally with up to 10' between posts to minimize intrusions through the podium or roof waterproofing system. They can also be fabricated with our new louver patterns for complete coverage but with adequate ventilation. Add our gates with matching finish and pattern to achieve a custom and continuous look to the system.



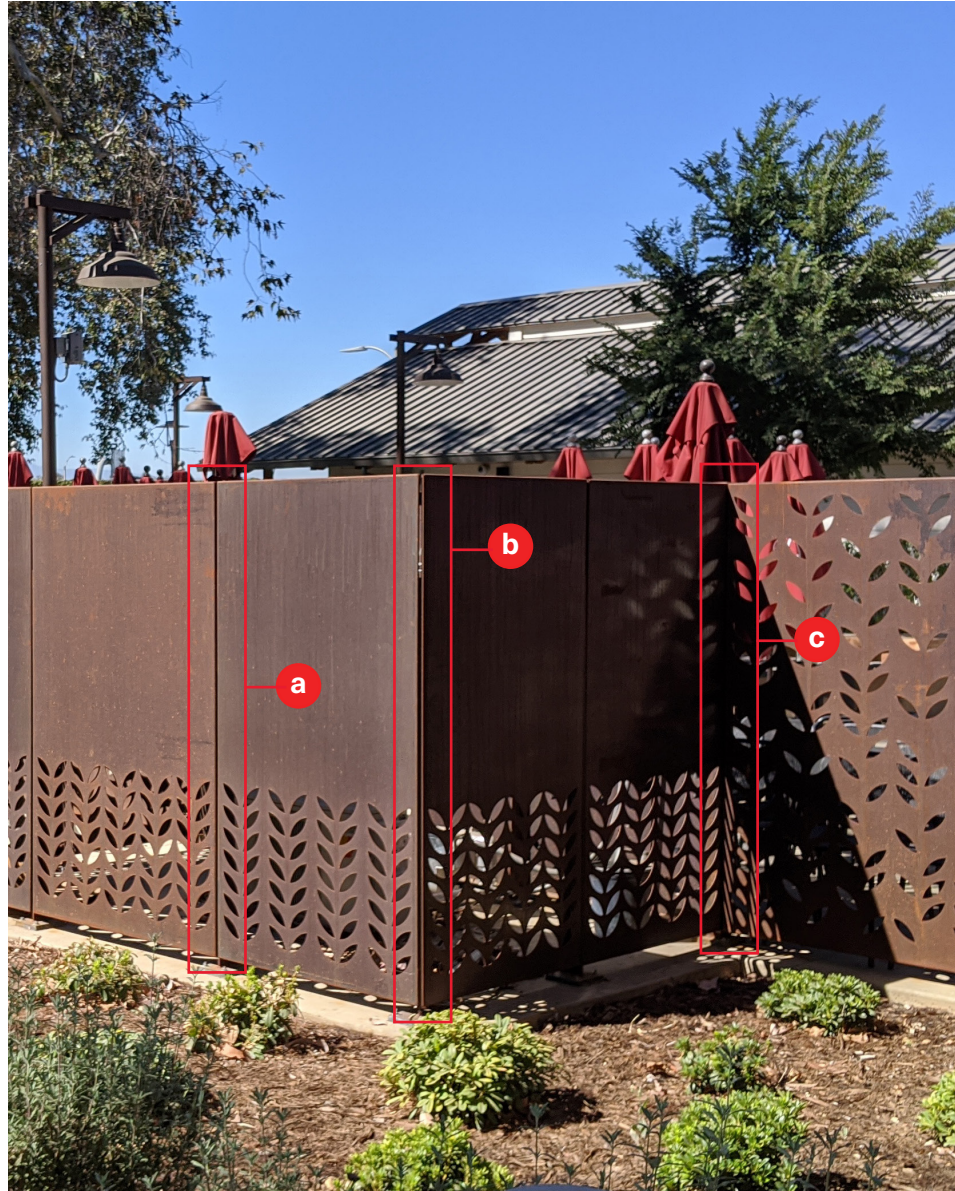
These drawings can not be used for the purposes of soliciting, negotiating, procuring, fabricating or otherwise obtaining quotes from other vendors. They are the sole and absolute property of BOK Modern and may only be used by or under license from BOK Modern.

Any reproduction, distribution, modification, public display or representation of the content in these drawings, in part or as a whole, in any medium, without the prior express written consent of BOK Modern LLC, is strictly prohibited and may result in legal action.



**MECHANICAL
SCREEN**

TYPICAL DETAILS



DETAIL KEY

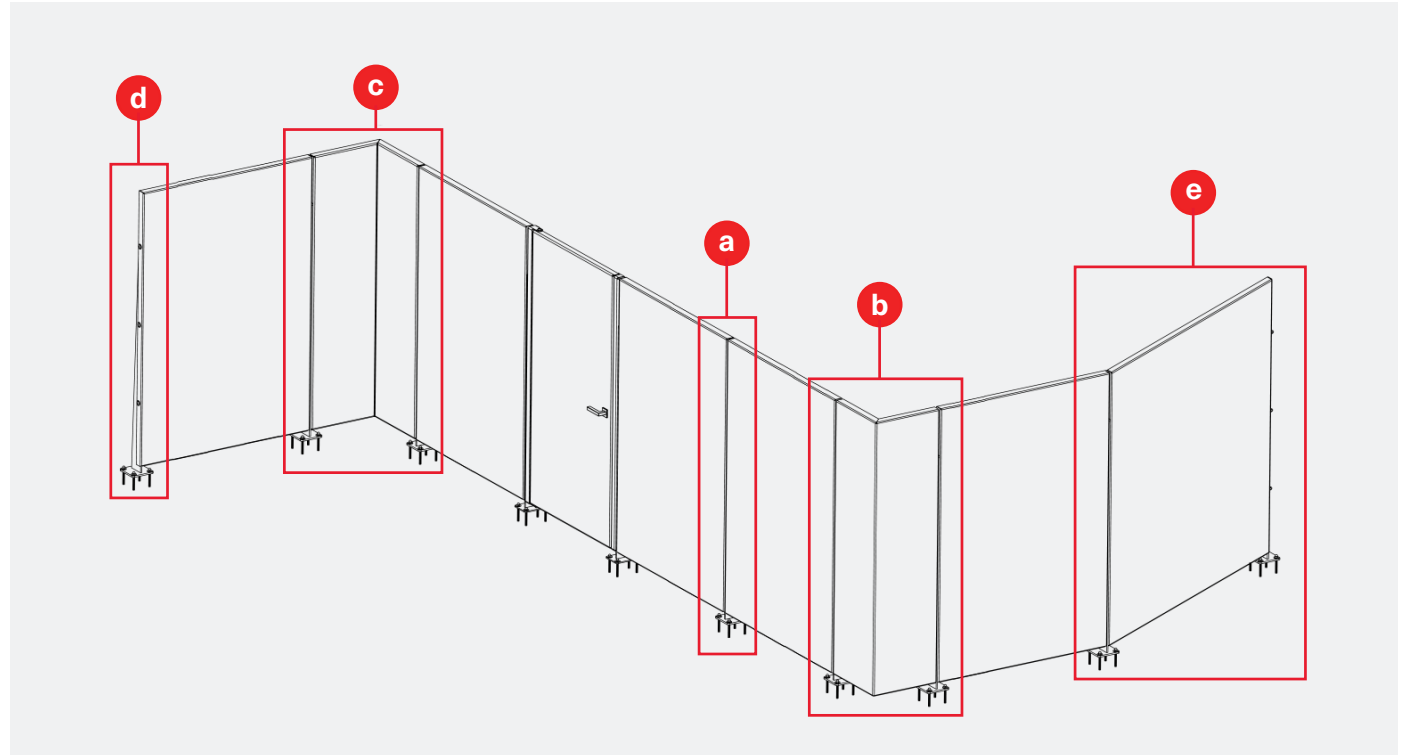
- Ⓐ Typ Connection
- Ⓑ Outside Corner
- Ⓒ Inside Corner

BOKMODERN.COM

For any questions please call
415.749.6500 X 295

**MECHANICAL
SCREEN**

TYPICAL DETAILS



DETAIL KEY

- Ⓐ Typ Connection
- Ⓑ Outside Corner
- Ⓒ Inside Corner
- Ⓓ End Connection
- Ⓔ Slope

BOKMODERN.COM

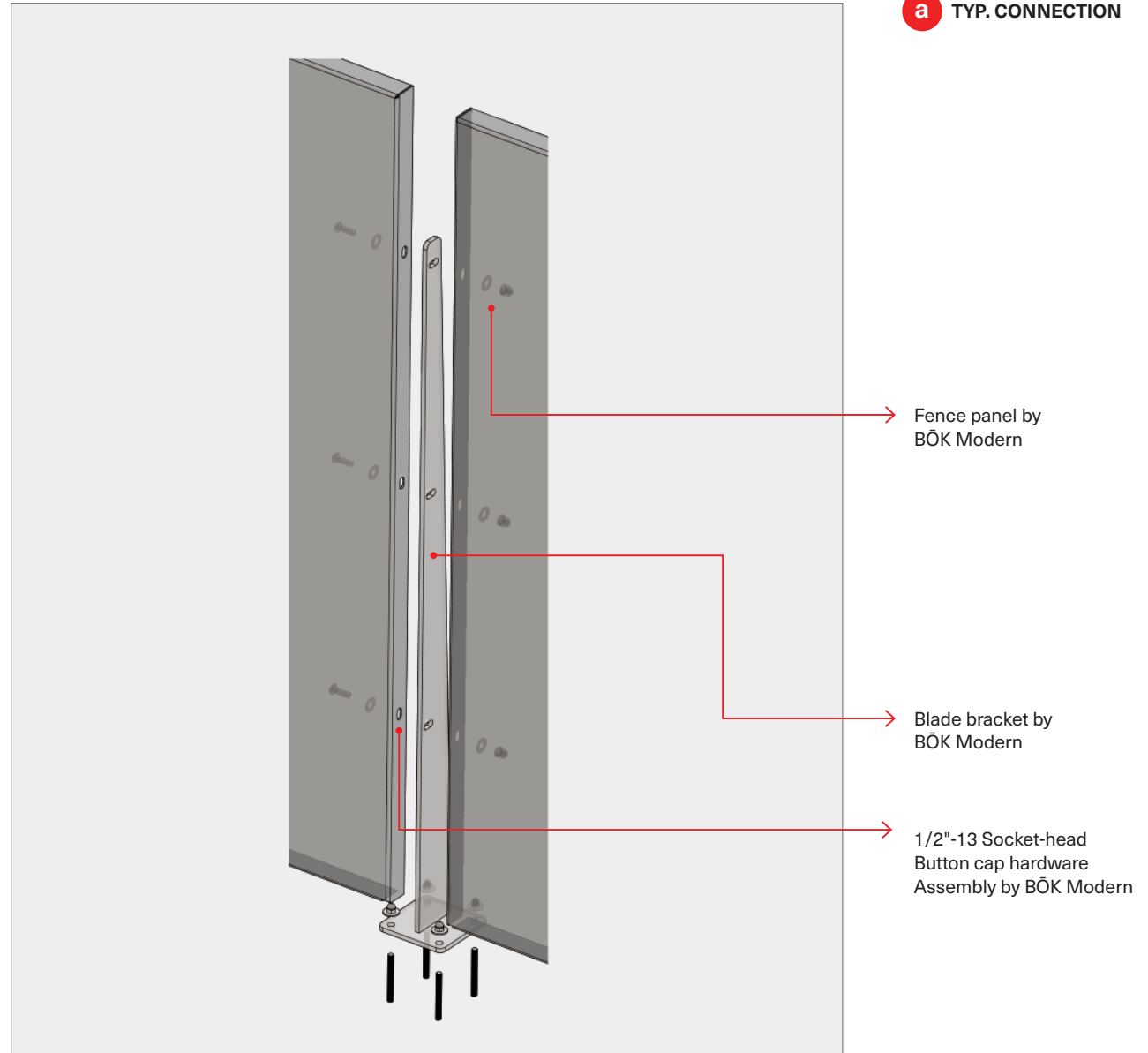
For any questions please call
415.749.6500 X 295

**MECHANICAL
SCREEN**

BOKMODERN.COM

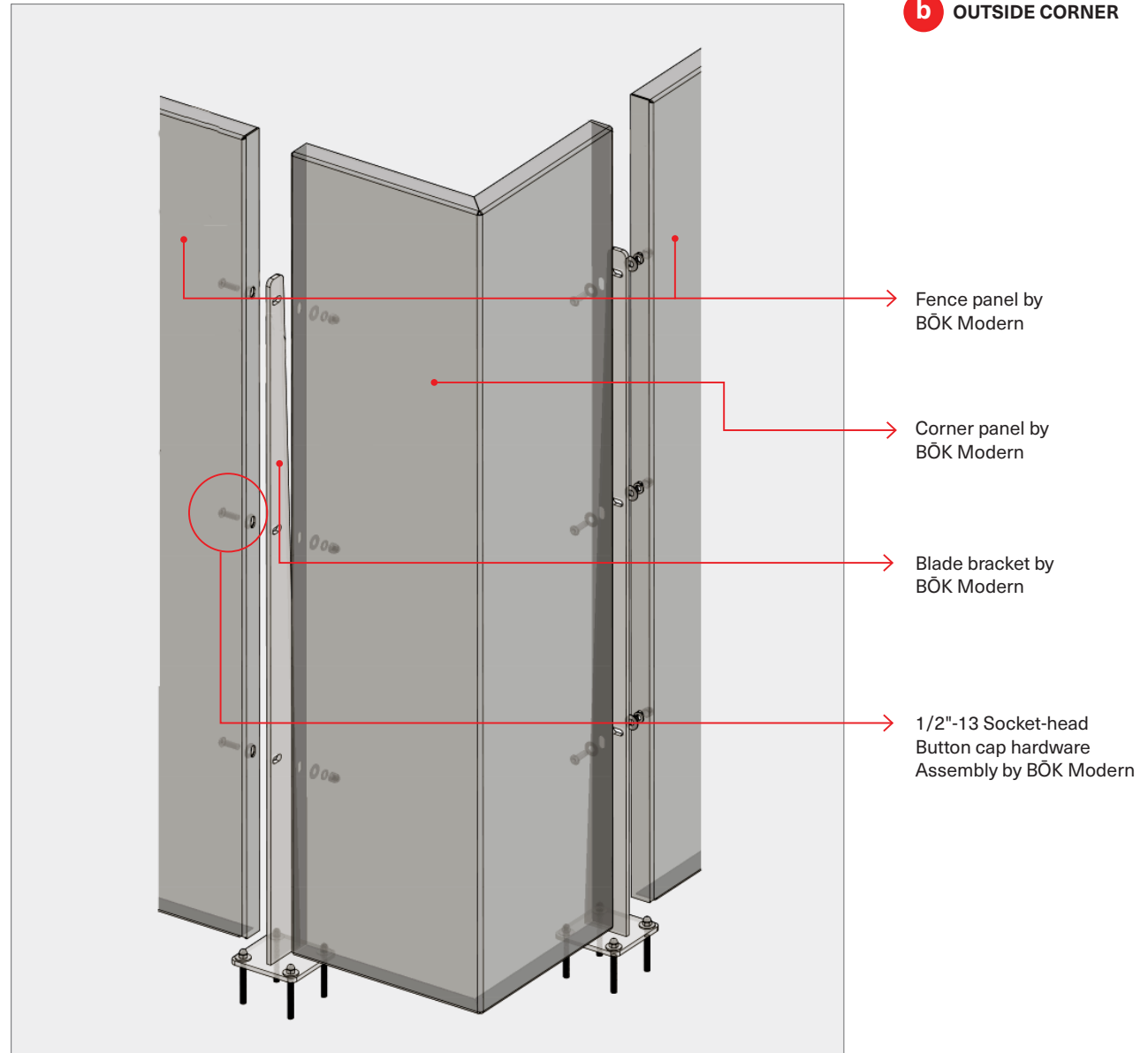
For any questions please call
415.749.6500 X 295

TYPICAL DETAILS



**MECHANICAL
SCREEN**

TYPICAL DETAILS

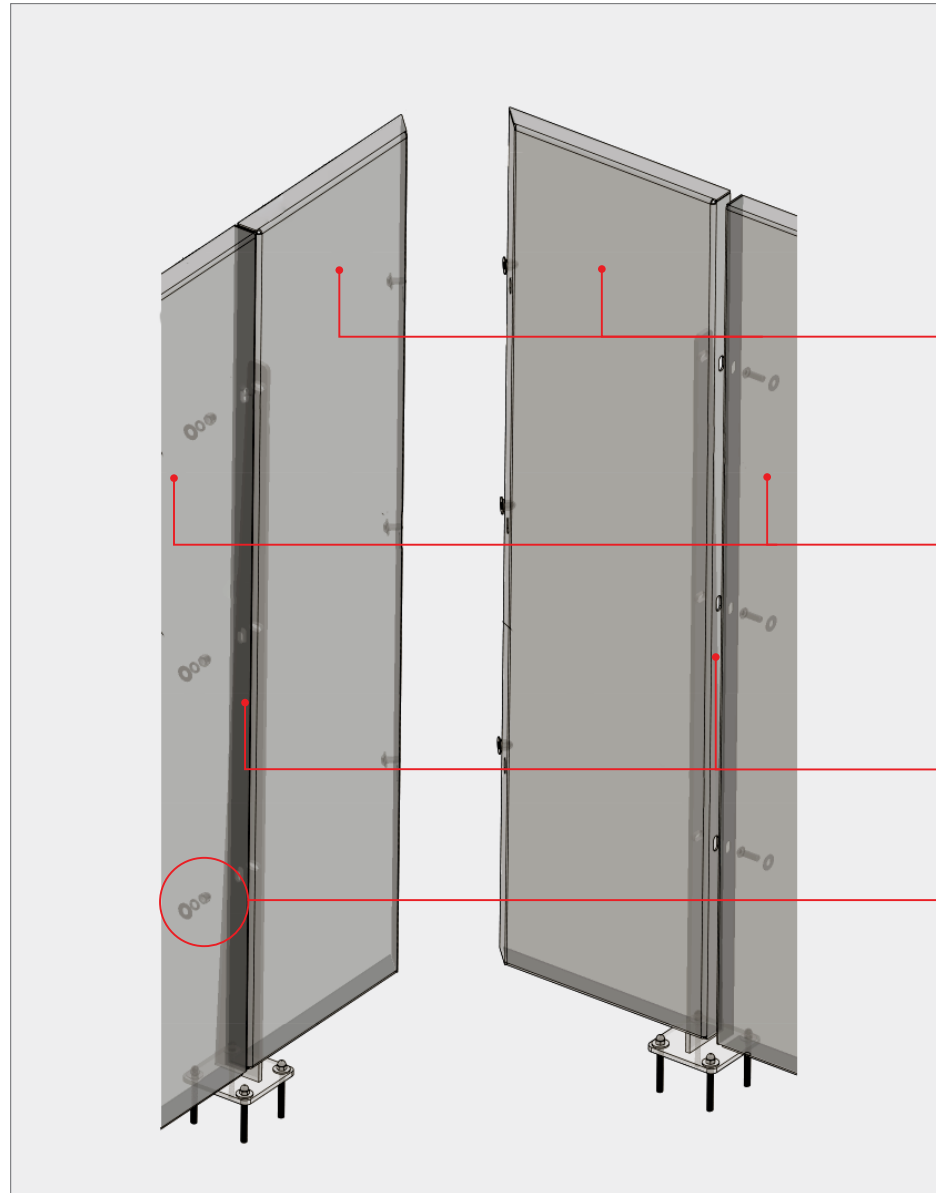


BOKMODERN.COM

For any questions please call
415.749.6500 X 295

**MECHANICAL
SCREEN**

TYPICAL DETAILS



C **INSIDE CORNER MITRE
PANELS UNDER 18" WIDE**

→ **Corner panel by
BÖK Modern**

→ **Fence panel by
BÖK Modern**

→ **Blade bracket by
BÖK Modern**

→ **1/2"-13 Socket-head
Button cap hardware
Assembly by BÖK Modern**

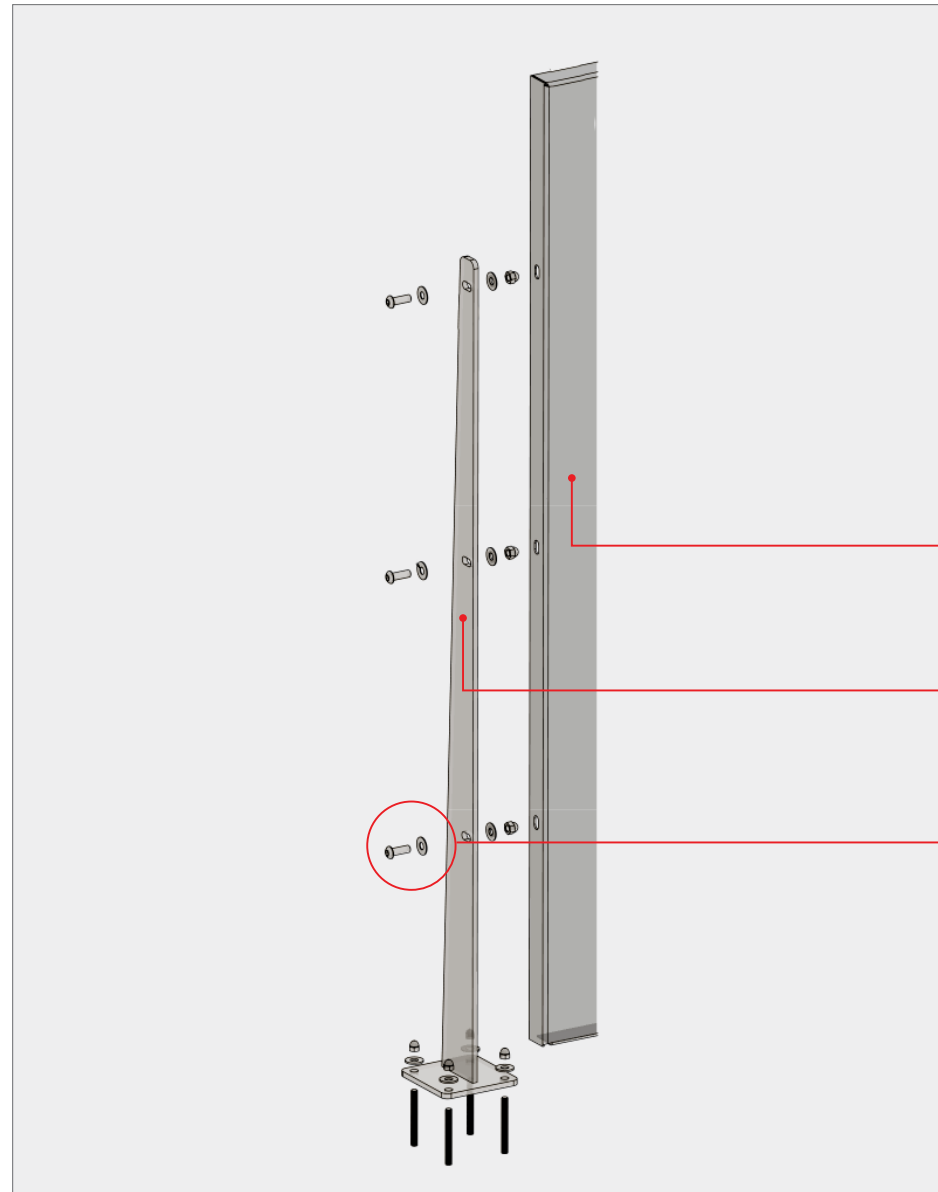
BOKMODERN.COM

For any questions please call
415.749.6500 X 295

**MECHANICAL
SCREEN**

TYPICAL DETAILS

C END CONNECTION



Fence panel by
BÖK Modern

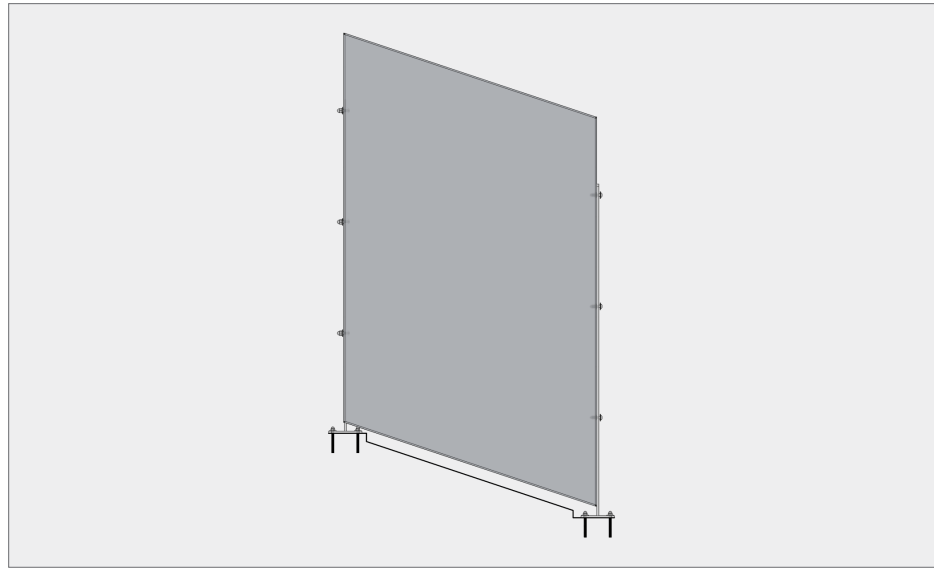
Blade bracket by
BÖK Modern

1/2"-13 Socket-head
Button cap hardware
Assembly by BÖK Modern

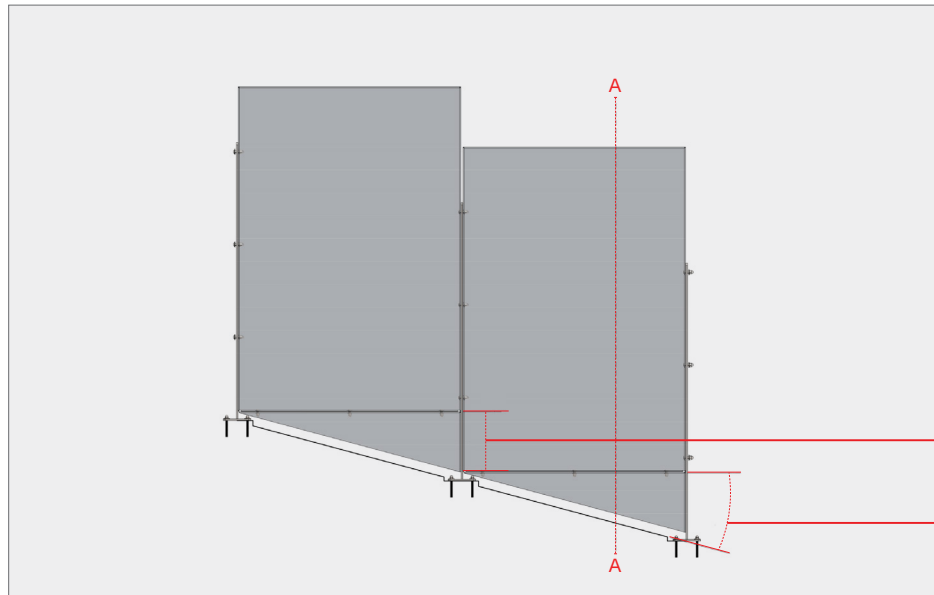
BOKMODERN.COM

For any questions please call
415.749.6500 X 295

**MECHANICAL
SCREEN**



Custom Sloped Panels



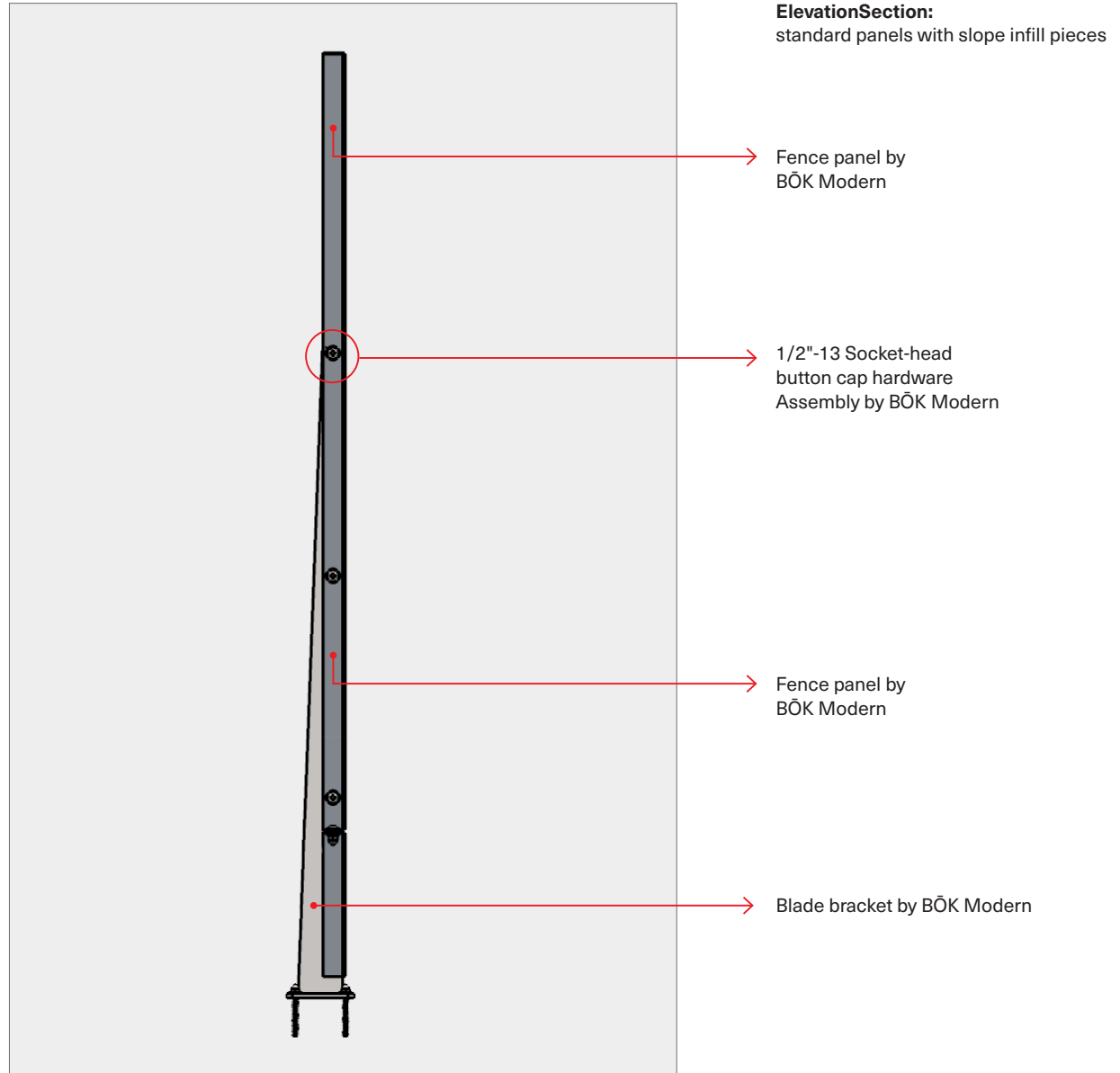
**Standard Panels with
Slope Infill Pieces**

Optimized panel sizing (slope):
To even further optimize the system,
typical panels can be used even on
slopes. Ask about our slope filler panels
and how they can be field modified to
accommodate any slope.

→ 1'-1" B.O. Panel to B.O. Panel

→ 15.00° Slope angle

**MECHANICAL
SCREEN**

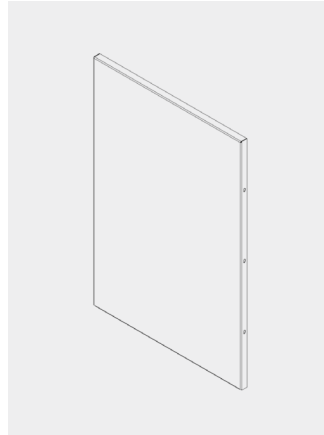


BOKMODERN.COM

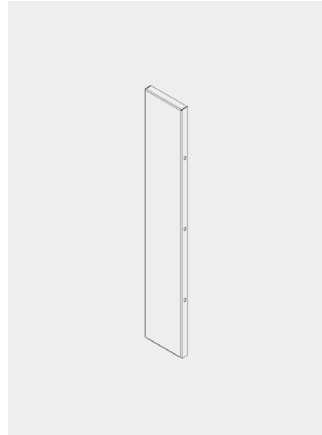
For any questions please call
415.749.6500 X 295

**MECHANICAL
SCREEN**

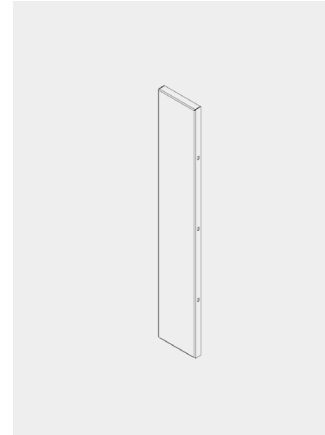
TYPICAL PANEL SIZES



Width : 45"
Fence Height : 4', 6' and 8'



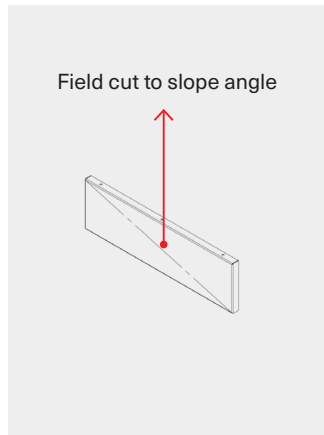
Width : 24"
Fence Height : 4', 6' and 8'



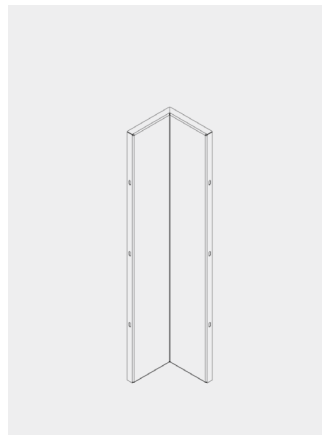
Width : 12"
Fence Height : 4', 6' and 8'



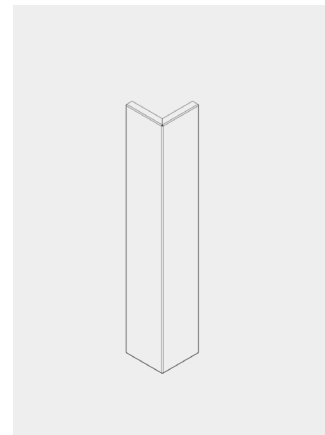
Blade



Sloped Skirt - Precut



Inside Corner ASM

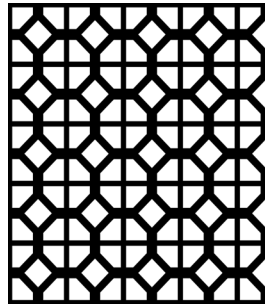


Outside Corner

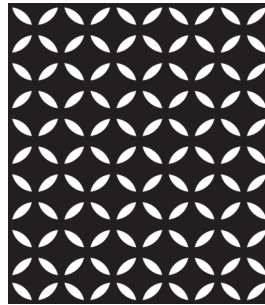
NOTE:

Optimized panel sizing: In order to optimize the bok system in the most financially efficient way, utilize these panel sizes.

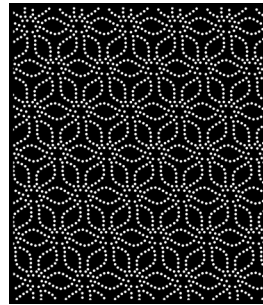
**MECHANICAL
SCREEN**



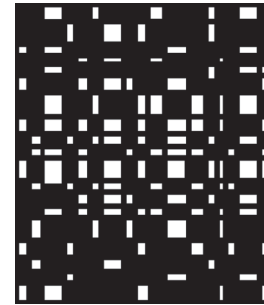
A 01



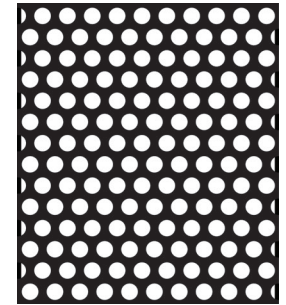
A 07



A 09



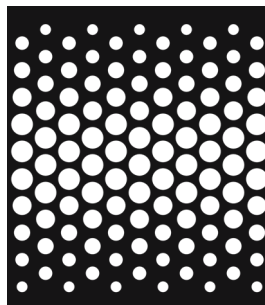
A 12



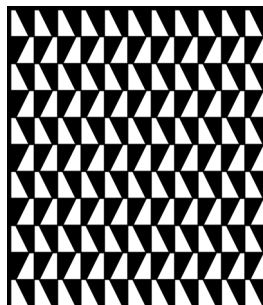
A 14



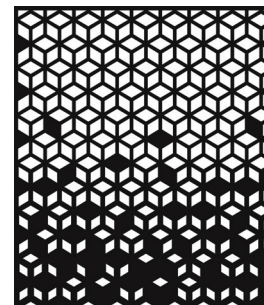
A 18



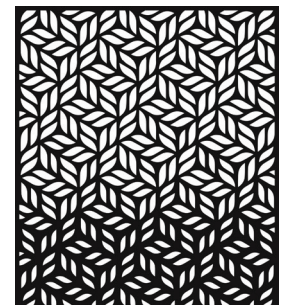
A 23



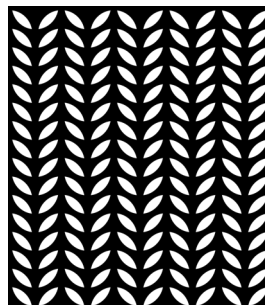
A 39



A 41



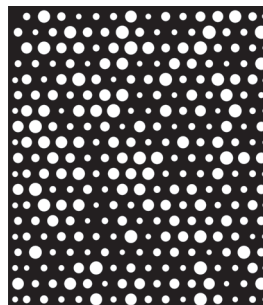
A 42



B 09



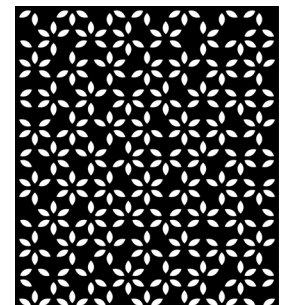
B 21



B 47



C 27



C 37

BOKMODERN.COM

For any questions please call
415.749.6500 X 295