

PRODUCT FAMILY	PRODUCT APPLICATIONS	SHEET/MATERIALS
Wallscreens	<ul style="list-style-type: none"> • Wallscreens • Garage Screens • Vinescreens™ 	<p>Up to 54" x 138" (Oversized sheets available) Typically 3/16" thick aluminum 12 Ga. Cor-ten™ (rusting steel)</p>

DESCRIPTION

BÖK Modern's Wallscreen systems are great for building exteriors, parking garage screens, and vine screens. The integrated structure formed into the panel reduces secondary structural members. The panel and bracket system can be directly mounted to the edge of the slab or other structure. Designed with the same precision laser cutting typical throughout the entire BÖK's line of products, our Wallscreens can be constructed in a wide array of patterns, shapes, colors and will support climbing plants. We also offer a new 'Bracket less' Garage screen system that mounts to the top of the slab or beam without the need for any embeds or brackets.

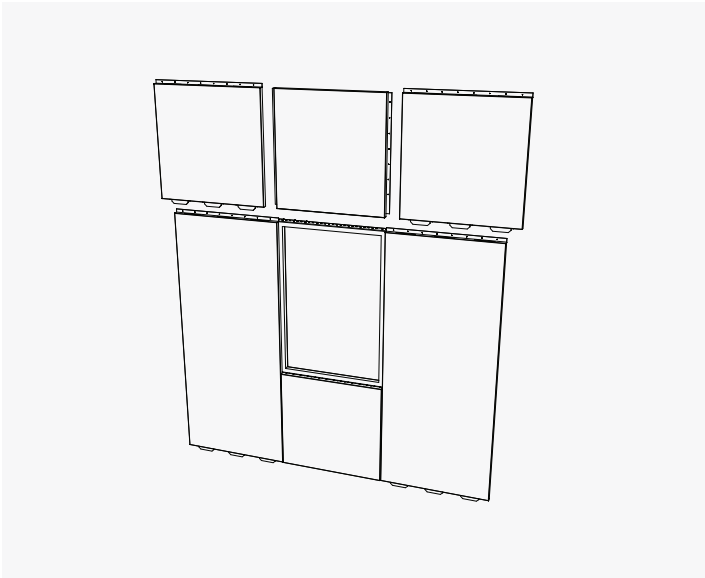
ADVANTAGES

- Larger panel sizes allowing longer spans between supporting structures.
- Can be used for naturally ventilated parking garages with patterns with over 50% openness available,
- Supports and encourages climbing plants (Vinescreens™)
- Provide great sun protection over glazing.
- Generally reduces the need for secondary frame/structure and panels can be 'staggered' to increase the span distance between structural connections.

ADDITIONAL APPLICATIONS

MECHANICAL SCREENS | SECURITY SCREENS | STAIR ENCLOSURES | WINDOW SHADING | FEATURE WALLS

Standard Rainscreen Systems



PRODUCT FAMILY	PRODUCT APPLICATIONS	SHEET/MATERIALS
Rainscreens	<ul style="list-style-type: none"> • Solid Rainscreens • Perforated Rainscreens • 3-Dimensional Rainscreens 	Variable sizes up to 4'6" x 11'-6" Pending engineering requirements. Typically 3/16" thick Aluminum, 12 Ga. Cor-ten™ (Rusting Steel)

DESCRIPTION

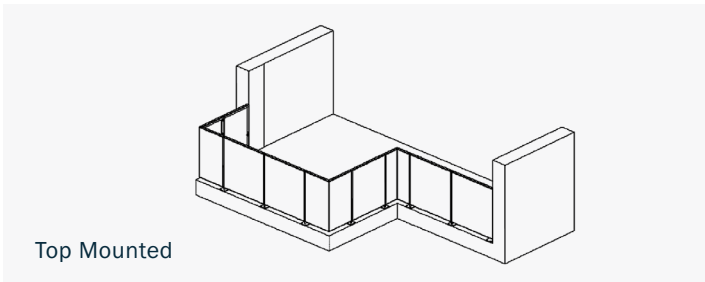
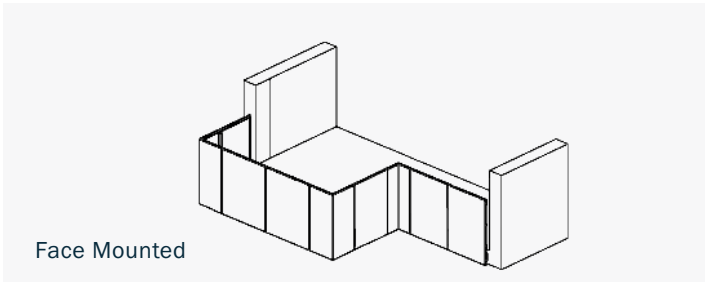
BÖK Modern's patented Rainscreen System is a non-flammable solid sheet metal; not a composite. The patented slot + tab system is quick and easy to install typically with no need for a secondary substructure, and is pressure-equalized which aims to control all forces that can drive water into the wall assembly. Panels can be solid or laser-cut (perforated) to your specifications in aluminum, stainless steel, or Cor-ten. Our system of break forming all sides of a panel assures no 'oil-canning'.

ADVANTAGES

- Integrated patented Tab+Slot system is easy to install ensuring perfect alignment from panel to panel as well as a consistent joint width. Can be used for naturally ventilated parking garages with patterns with over 50% openness available,
- Unlike most rainscreen systems on the market, we can form irregular panels as well as break-fold across the face to create 3-dimensional forms versus just flat panels.
- Reduces material needs (no brackets) as they can direct mounts to the wall.
- Our panels are not a composite, so no need for fire rating or risk of delamination.

ADDITIONAL APPLICATIONS

- Low maintenance exterior metal panel system in flat and 3-dimensional forms in a variety of geometric shapes.
- Can be perforated for aesthetics or to cover surface vents on building versus unsightly pop-through vents.



PRODUCT FAMILY	PRODUCT APPLICATIONS	SHEET/MATERIALS
Guardrails	<ul style="list-style-type: none"> Balcony Guardrail Typ. Bracket Face Mount Balcony Guardrail Universal Mount™ 	<p>Up to 54" wide panels Typically 3/16" thick Aluminum, 12 Ga. Cor-ten™ (Rusting Steel)</p>

DESCRIPTION

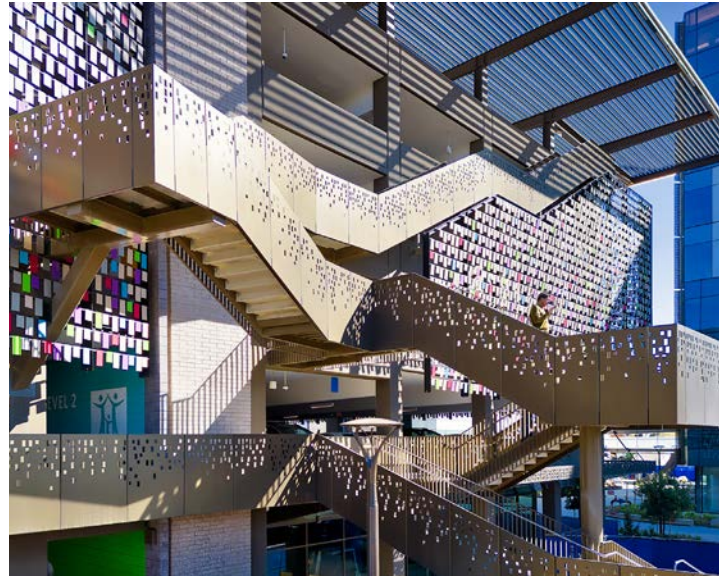
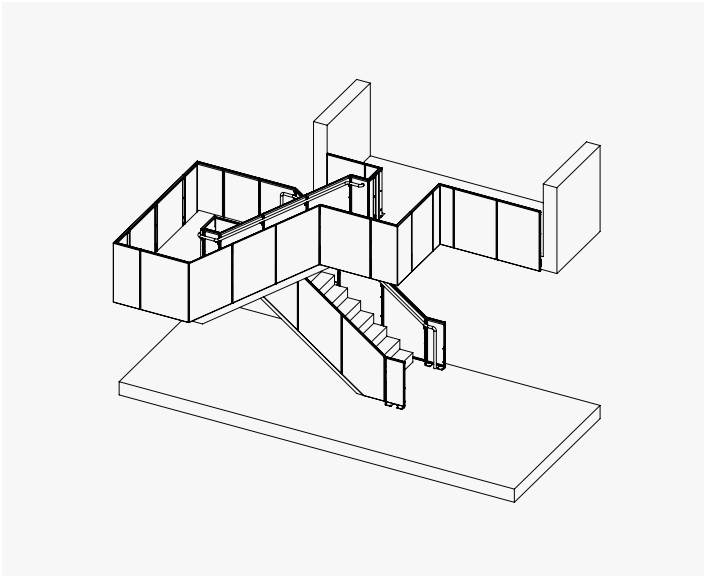
Our laser-cut Balcony Guardrails are a unitized structural panel system that requires no additional posts or other secondary structure. In addition to providing attractive guardrails, they are also excellent for retrofitting existing, non-conforming guardrails. They can be customized with our accessories, including lighting, wood caps, and floor closure plates. Our Universal Mount™ and associated brackets are particularly useful to ease the installation and waterproofing of guardrail systems by adding adjust-ability to the bracket even after waterproofing.
(See product sheet for our Universal Mount™ information)

ADVANTAGES

- Less material, Lower cost (No Posts)
- Less expensive Brackets versus posts.
- When utilizing our Universal Mount™ allows easier field measurements, fewer structural members, faster installation (adjustable as opposed to fixed bracket), less trade coordination, and simpler, safer waterproofing.
- Very low maintenance compared to wood (decay) and glass railings (cleaning).

ADDITIONAL APPLICATIONS

BALCONY GUARDRAIL - FACE MOUNTED | BALCONY GUARDRAIL - TOP MOUNTED | GROUND LEVEL PATIO ENCLOSURES



PRODUCT FAMILY	PRODUCT APPLICATIONS	SHEET/MATERIALS
Guardrails	<ul style="list-style-type: none"> • Stair Guardrail Typ. Bracket Face Mount • Stair Guardrail Universal Mount™ • Stair Guardrail Top Mount 	<p>Up to 54" wide panels Typically 3/16" thick Aluminum, 12 Ga. Cor-ten™ (Rusting Steel)</p>

DESCRIPTION

Our laser-cut Balcony Guardrails are a unitized structural panel system that requires no additional posts or other secondary structure. In addition to providing attractive guardrails, they are also excellent for retrofitting existing, non-conforming guardrails. They can be customized with our accessories, including lighting, wood caps, and floor closure plates. Our Universal Mount™ and associated brackets are particularly useful to ease the installation and waterproofing of guardrail systems by adding adjust-ability to the bracket even after waterproofing.
(See product sheet for our Universal Mount™ information)

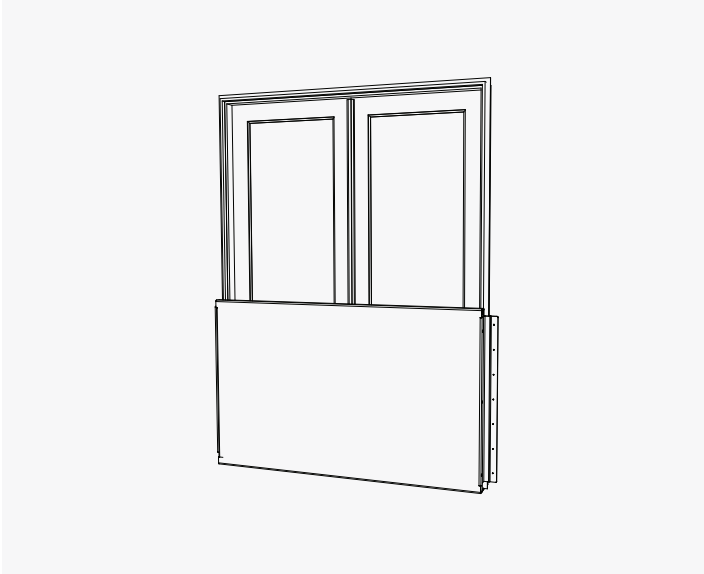
ADVANTAGES

- Less material, Lower cost (No Posts)
- Less expensive Brackets versus posts.
- When utilizing our Universal Mount™ allows easier field measurements, fewer structural members, faster installation (adjustable as opposed to fixed bracket), less trade coordination, and simpler, safer waterproofing.

ADDITIONAL APPLICATIONS

STAIR GUARDRAIL - FACE MOUNTED | STAIR GUARDRAIL - TOP MOUNTED | PEDESTRIAN RAMP GUARDRAIL

Standard Juliette Guardrail System



PRODUCT FAMILY	PRODUCT APPLICATIONS	SHEET/MATERIALS
Guardrails	"Nail-On" Juliette™	Up to 54" high panels x 114" wide Typically 3/16" Aluminum, 12 Ga. Cor-ten™ (Rusting Steel)

DESCRIPTION

Our "Nail-On" Juliette Balcony transforms living spaces allowing sliding glass and in-swinging glass doors to 'open up' and allow more light and views than a standard window. They utilize our newest patented bracket- a continuously fastened linear bracket that gets "nailed-on" outside of the nailing flange of the door frame. This eliminates large load concentrated brackets and bolts and is particularly useful to ease the installation and waterproofing.

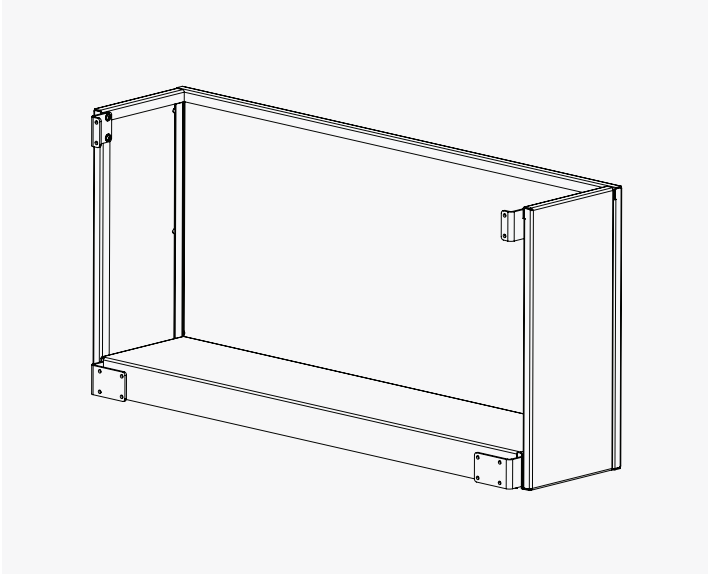
ADVANTAGES

- Less material, Lower bracket cost
- Less expensive Brackets versus posts.
- Less structural backing, faster installation, less trade coordination, and simpler, safer waterproofing.
- No Field measurements are required as they are sized to the door frame.
- Very low maintenance compared to wood (decay) and glass railings (cleaning).

ADDITIONAL APPLICATIONS

- Flush Guardrail protection for sliding glass or inward swing glass doors.

Standard Juliette Balcony System



PRODUCT FAMILY	PRODUCT APPLICATIONS	SHEET/MATERIALS
Guardrails	Bolt-On Juliet Balcony	Up to 24" depth and 96" width Typically 3/16" and 1/4" thick Aluminum, 12&10 Ga. Cor-ten™ (Rusting Steel)

DESCRIPTION

Our Bolt-on Juliette Balconies protect in-swinging or sliding glass doors and allow you to open up a room beyond what can be accomplished simply with windows. Our Juliet Balconies provide a small platform to step outside while providing an additional dimension to your façade and livening up your project with our handsome, signature patterns.

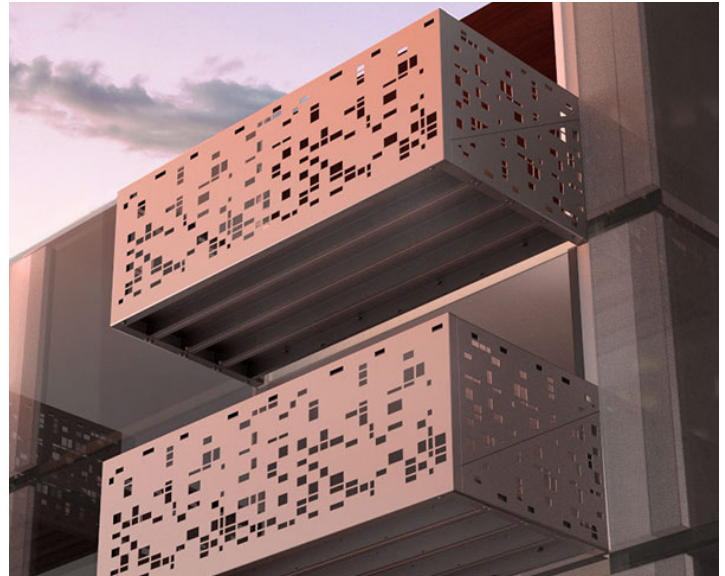
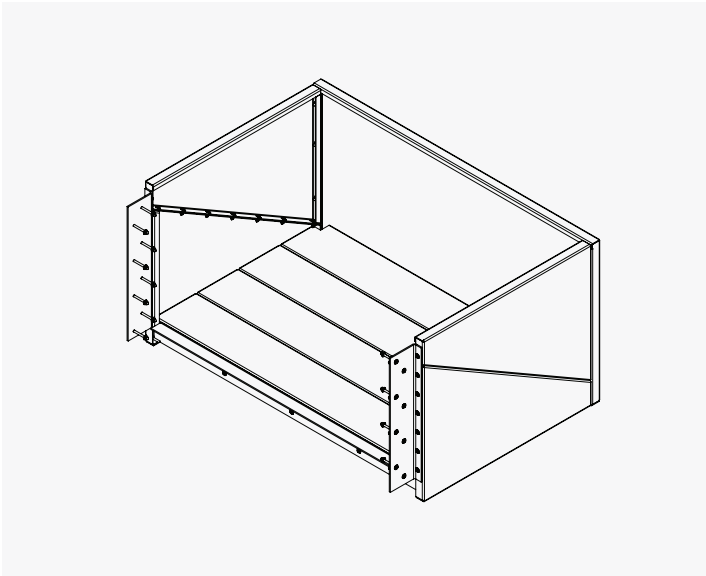
ADVANTAGES

- Delivered as a 'kit-of-parts' that gets assembled in place.
- Simple 2-point connections to building minimizing waterproofing instances.

ADDITIONAL APPLICATIONS

- Juliette Balcony for sliding or in-swinging doors.
- Standard recessed balcony extensions

Standard Bolt-On Balcony Guardrail System



PRODUCT FAMILY	PRODUCT APPLICATIONS	SHEET/MATERIALS
Guardrails	"Bolt-On" Balcony™	5' x 8' (Other sizes available pending engineering) Typically 3/16" and 1/4" thick Aluminum, 12 & 10 Ga. Cor-ten™ (Rusting Steel)

DESCRIPTION

Our patented Bolt-On Balcony™ requires no hangers, no additional steel framing, no field welding, and no cantilevered members through the structure. It is quick and simple to assemble on the ground before attachment to the building. BÖK's Bolt-On Balcony is available in aluminum and Cor-Ten steel and can be laser cut in an infinite array of patterns. Our beautiful Bolt-On Balconies are self-contained. No additional metal or decking is needed, though it can be added for decorative purposes.

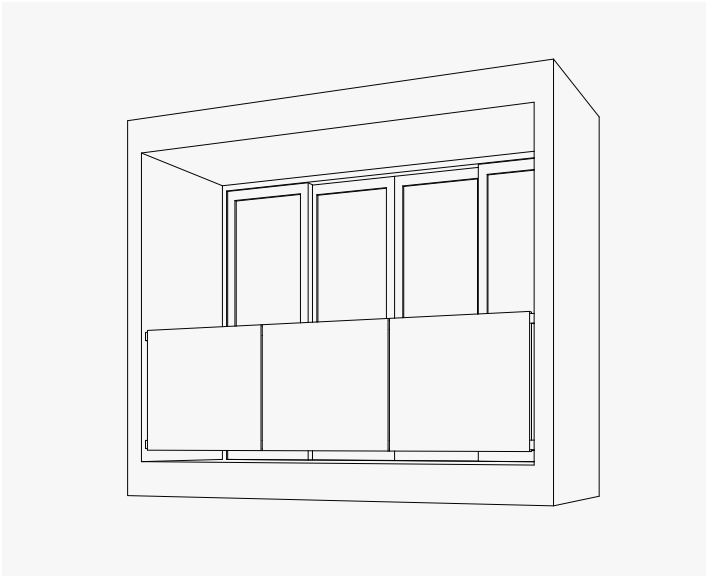
ADVANTAGES

- Can be assembled on the ground and installed in one piece or assembled in place.
- Full 'Kit-of Part' Balcony.
- Eliminates the need for unsightly hangers.
- Includes floor panels that have integral gutters eliminating drips to the balcony below.
- Low maintenance compared to wood (decay) and glass railings (cleaning).

ADDITIONAL APPLICATIONS

- Completely self-contained balconies that attach to the exterior structure without hanging rods.

Standard Long Span Guardrail System



PRODUCT FAMILY	PRODUCT APPLICATIONS	SHEET/MATERIALS
Guardrails	Floating Long-Span Balcony	Up to 12' wide Typically 3/16" thick Aluminum, 12 Ga. Cor-ten™ (Rusting Steel)

DESCRIPTION

Our Floating Balcony Guardrails are the perfect fit for walled balcony openings up to 12' wide when anchoring to the deck is not available. Brackets are secured to adjacent walls and stiffeners support a multi-panel span that appears to "float" off the deck.

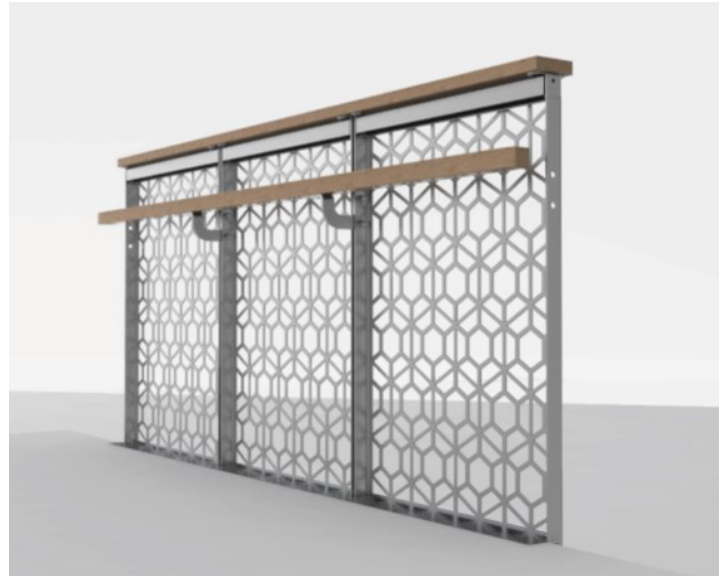
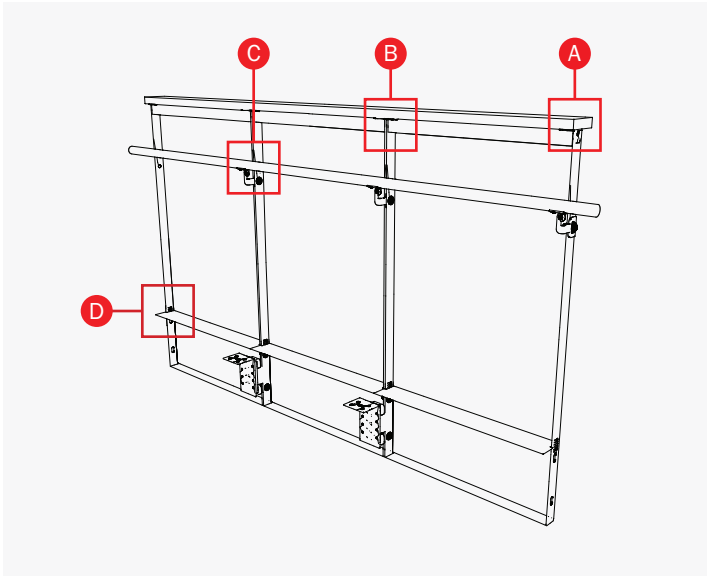
ADVANTAGES

- No brackets are needed on the deck only on the sides minimizing waterproofing instances.

ADDITIONAL APPLICATIONS

- Guardrails for balconies that have a structure on either side and the desire to 'free-span' the railing.

Standard Guardrail Accessory Systems



PRODUCT FAMILY	PRODUCT APPLICATIONS	SHEET/MATERIALS
Guardrails Accessories	<p style="text-align: center;">A</p> <p style="text-align: center;">Wood Cap Support 3/16" Aluminum</p>	<ul style="list-style-type: none"> • When it is desired to have a wood cap on top of the guardrail, concealed and fastened to the top of the guardrail. • Adds a level of warmth and depth to our panel system while providing a 'lean' rail.
	<p style="text-align: center;">B</p> <p style="text-align: center;">Lighting Unit Support 1/8" Aluminum</p>	<ul style="list-style-type: none"> • Snap-in channel supports a linear LED lighting fixture (by Others) and fits inside the existing handrail top rail return. • Provides support of LED lighting fixtures giving a washing of light on the inside face of the panel. • Lighting 'bleed' illuminates the walking surface providing pathway lighting
	<p style="text-align: center;">C</p> <p style="text-align: center;">Handrail Bracket Support Stainless Steel</p>	<ul style="list-style-type: none"> • Handrail support directly from our guardrails (handrails by others) • The angle can be adjusted as needed for varying slopes • They can be left natural stainless steel for finished to match the guardrail finish
	<p style="text-align: center;">D</p> <p style="text-align: center;">Walking Surface Closure Plate 1/8" Aluminum</p>	<ul style="list-style-type: none"> • Although the gap between the face of the panel and the deck face is code-compliant, the closure plate prohibits debris from falling into the gap between the deck and the panel. A cleaner detail on finished floors. • Pop-in easy attachment that attaches to the panel and is set on the deck edge.

Standard Blade or Post Fence System



PRODUCT FAMILY	PRODUCT APPLICATIONS	SHEET/MATERIALS
Fencing & Gates	Blade or Post Fence	Heights up to 8' and widths up to 48" Typically 3/16" thick Aluminum, 12 Ga. Cor-ten™ (Rusting Steel) and Stainless Steel.

DESCRIPTION

Our Blade and Post Fence uses a narrow post or thin blade post for lateral support rather than heavy, unsightly posts. No additional horizontal rails are needed, as our formed panels provide a post-to-post structure. Resulting in a nearly seamless look with our blade posts, the result is a very contemporary appearance constructed in solid metal or with a virtually infinite array of patterns.

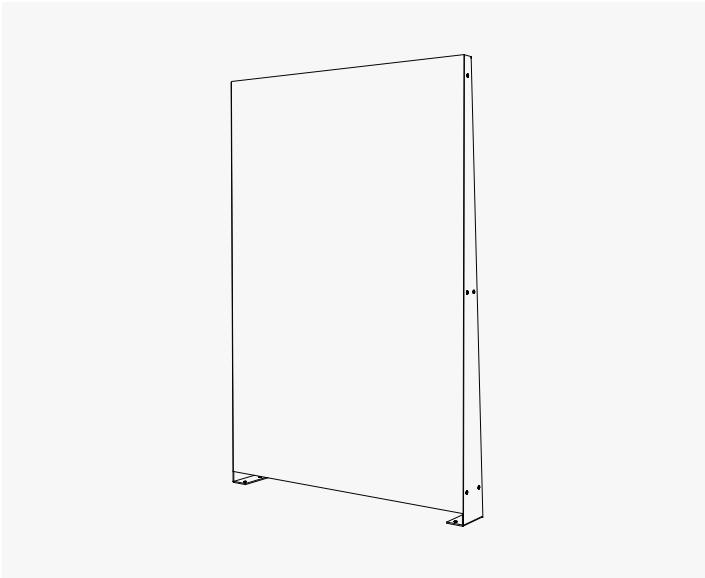
ADVANTAGES

- Blade minimizes visual posts.
- Our fencing will last decades compared to other fence types (wood) with very low maintenance.
- Can be virtually any color and pattern and coordinates well with other laser-cut metal panels on site.

ADDITIONAL APPLICATIONS

SITE FENCING | MECHANICAL SCREENING | POOL FENCING | SECURITY FENCING

Standard Post-Free™ Fence System



PRODUCT FAMILY	PRODUCT APPLICATIONS	SHEET/MATERIALS
Fencing & Gates	Post Free Fence™	Heights up to 8' and widths up to 48" Typically 3/16" thick Aluminum, 12 Ga. Cor-ten™ (Rusting Steel)

DESCRIPTION

Our patented fencing system, the Post-Free™ Fence, is ideal for easy installations and economical options. No posts are needed as the structural support is folded directly into the panel during fabrication which results in a very seamless, minimal and clean design.

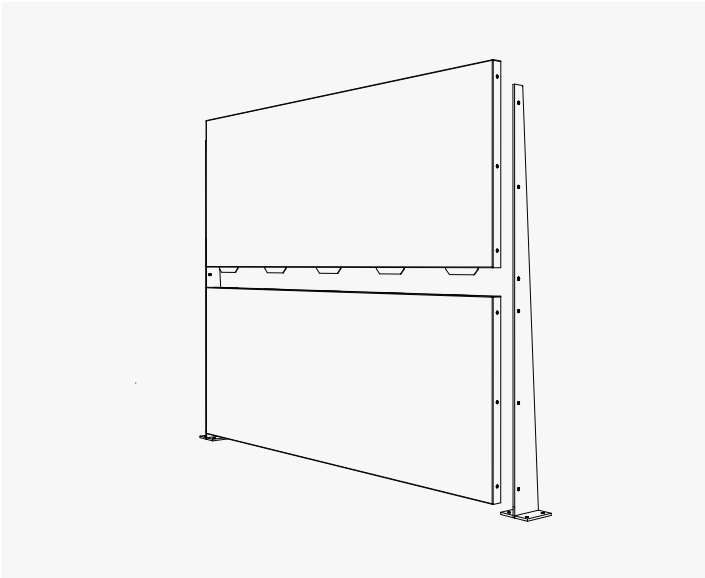
ADVANTAGES

- No posts: lower material cost, easier install
- Our fencing will last decades compared to other fence types (wood) with very low maintenance.
- Can be virtually any color and pattern and coordinates well with other laser-cut metal panels on site.
- Very low maintenance compared to wood (decay) and high longevity (aluminum and stainless steel)

ADDITIONAL APPLICATIONS

SITE FENCING | MECHANICAL SCREENING | POOL FENCING | SECURITY FENCING

Standard Long Span Fence Systems



PRODUCT FAMILY	PRODUCT APPLICATIONS	SHEET/MATERIALS
Fencing & Gates	Long Span Fence/ Mechanical Enclosure	Heights up to 8' and widths up to 48" Typically 3/16" thick Aluminum, 12 Ga. Cor-ten™ (Rusting Steel)

DESCRIPTION

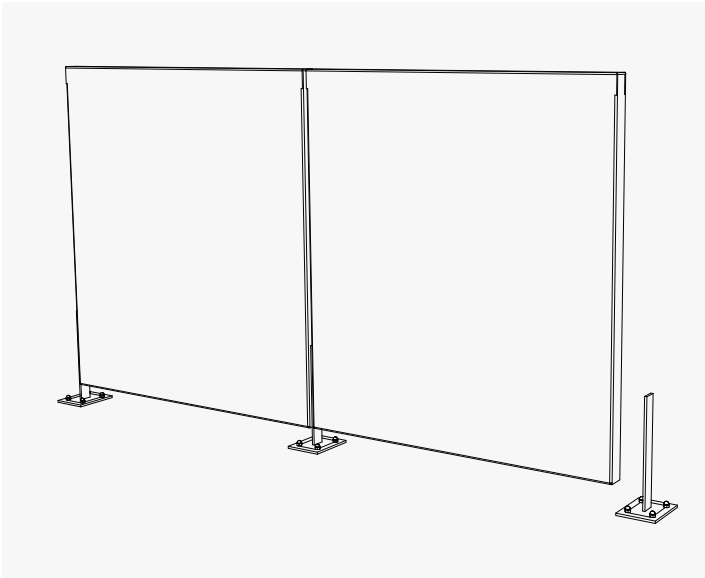
For applications with fewer posts and longer spans between, our Long Span Fences span up to 8' between posts. Panels are stacked horizontally. Our Long Span Fences are also ideal for use in tall, rooftop mechanical screens as they require fewer penetrations through the roof membrane.

ADVANTAGES

- Fewer posts mean fewer footings or roof penetrations in the case of rooftop applications.
- Very low maintenance compared to wood (decay) and high longevity (aluminum and stainless steel)

ADDITIONAL APPLICATIONS

SITE FENCING | MECHANICAL SCREENING | POOL FENCING | SECURITY FENCING



PRODUCT FAMILY	PRODUCT APPLICATIONS	SHEET/MATERIALS
Fencing & Gates	Low Fence/Divider	Heights up to 4' and widths up to 48" Typically 3/16" thick Aluminum, 12 Ga. Cor-ten™ (Rusting Steel)

DESCRIPTION

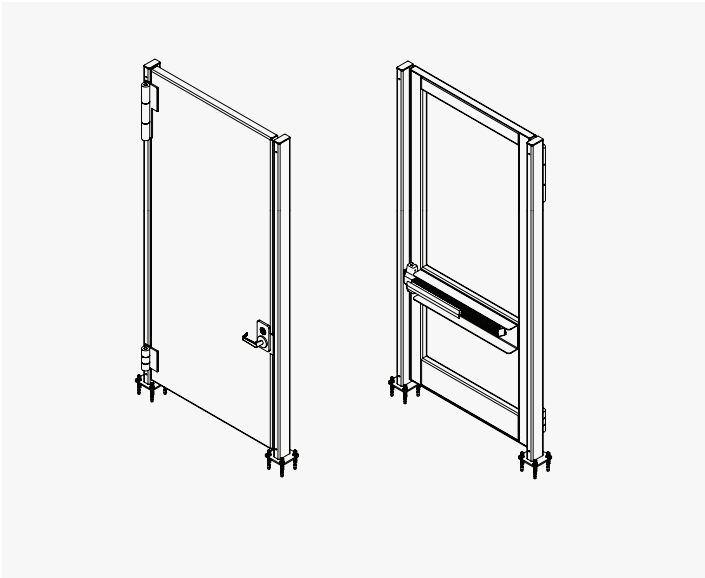
BÖK Modern provides a great solution for lower, top-mounted, freestanding dividers and gates. BÖK dividers can be mounted by utilizing our simple 'stand' blade brackets. These installations are ideal for defining private space in multi-family residential developments and outdoor restaurant dining. Add our gates with matching finish and pattern to achieve a custom and continuous look to the system.

ADVANTAGES

- Smaller bracket than our typical fencing.
- Our fencing will last decades compared to other fence types (wood) with very low maintenance.
- Can be virtually any color and pattern and coordinates well with other laser-cut metal panels on site.

ADDITIONAL APPLICATIONS

PATIO DIVIDERS | LOW FENCING | PEDESTRIAN CONTROL



PRODUCT FAMILY	PRODUCT APPLICATIONS	SHEET/MATERIALS
Fencing & Gates	Gate/Utility Gates	Heights up to 8' and widths up to 48" Typically 3/16" and 1/4" thick Aluminum, 12 & 10 Ga. Cor-ten™ (Rusting Steel)

DESCRIPTION

Our Utility Gates are sturdy and beautiful. Upon construction, they are ready to accept your hardware, or you can choose from a selection of ours. They can be laser cut in almost any pattern and constructed of solid metal. Our utility gates are perfect for utility alcoves containing gas meters, for example, as they are visually open, well-ventilated, and can be made up to 10' tall. They can be swinging, sliding, or bi-fold to allow unobstructed access to the meters.

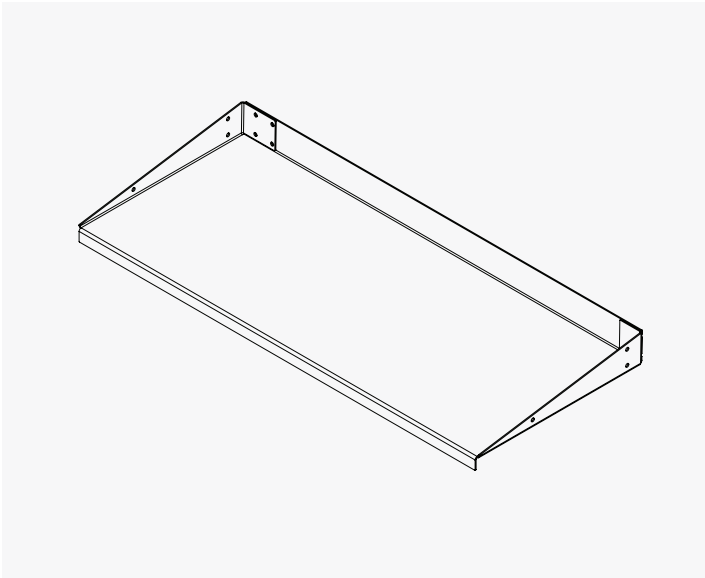
ADVANTAGES

- Welded aluminum frame (strong but lightweight), no exposed face fasteners, pre-cut to accept hardware.

ADDITIONAL APPLICATIONS

SECURITY | POOL | UTILITY GATES TO MATCH OUR LINE OF FENCE PRODUCTS

Standard Direct Mount Canopy System



PRODUCT FAMILY	PRODUCT APPLICATIONS	SHEET/MATERIALS
Sunshades & Canopies	Direct Mount Canopy	Panel widths up to 96" and depths up to 30" Typically 3/16" thick Aluminum, 12 Ga. Cor-Ten™ (Rusting Steel).

DESCRIPTION

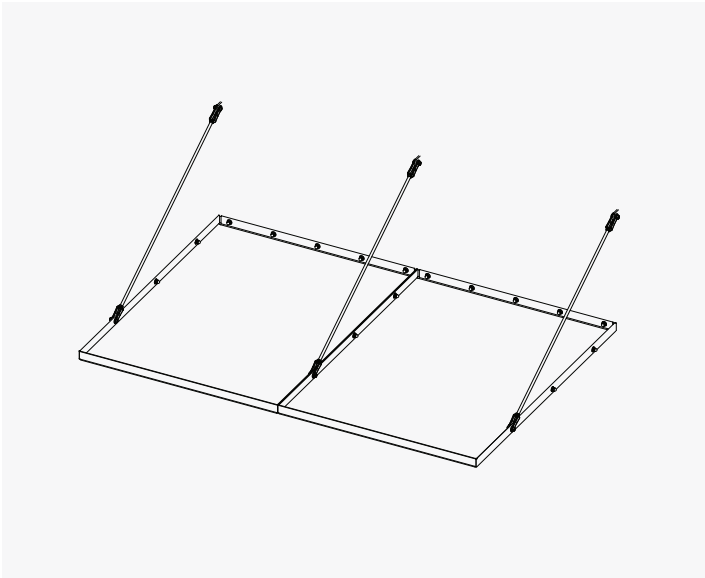
Our first totally 'bracket-less' canopy, the supporting structure of the Direct Mount Canopy is folded into the single sheet of metal from which it is fabricated. It is then attached directly to a concrete slab, Unistrut Embed, or Universal Bracket Connection without the need for traditional brackets, reducing or eliminating penetrations through the water-proofing system.

ADVANTAGES

- No knife blade brackets are needed, panel sides to a folds create structure.
- Can be solid, louvered, or with laser cut patterns.

ADDITIONAL APPLICATIONS

- Sunshade and rain protection canopies for windows and doors.



PRODUCT FAMILY	PRODUCT APPLICATIONS	SHEET/MATERIALS
Sunshades & Canopies	Rod & Clevis Canopy	Panel widths up to 54" and depths up to 96" Typically 3/16" thick Aluminum, 12 Ga. Cor-Ten™ (Rusting Steel).

DESCRIPTION

For canopies with deeper overhangs, our Rod and Clevis Canopy can extend up to 8' off the face of the building.

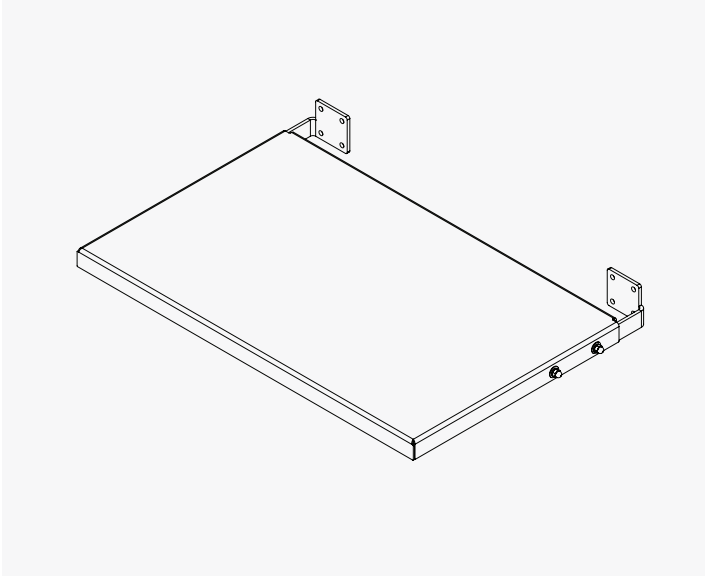
ADVANTAGES

- Allows deeper canopies without the need for additional costly steel secondary structure.
- Can be solid, louvered, or with laser cut patterns.

ADDITIONAL APPLICATIONS

- Deep canopies for sun shading and rain protection.

Standard Bracketed Sunshade System



PRODUCT FAMILY	PRODUCT APPLICATIONS	SHEET/MATERIALS
Sunshades & Canopies	Bracketed Sunshade/Canopies	Panel widths up to 132" and depths up to 24" Typically 3/16" thick Aluminum, 12 Ga. Cor-Ten™

DESCRIPTION

Our more traditional Bracketed Sunshade provides sun-shading in either a perforated, louvered, or solid style. These sunshades can be configured for one, two, three, or four sides of the window. They can also be shaped into various tapered forms. The full-length blade bracket allows for a deeper sunshade, which we fold into the panel returns for a sleek look.

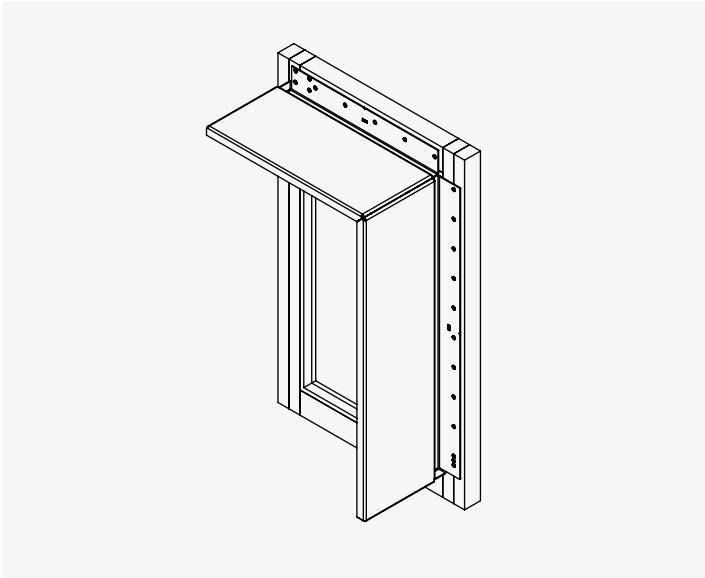
ADVANTAGES

- Allows deeper canopies without the need for additional costly steel secondary structure. Can be solid, louvered, or with laser cut patterns.
- This system can achieve larger spans for example going from floor to floor vertically.
- Can be solid, louvered or with laser cut patterns.

ADDITIONAL APPLICATIONS

- Canopies for sun shading and rain protection over windows and doors.

Standard 'Nail-On' Sunshade™ System



PRODUCT FAMILY	PRODUCT APPLICATIONS	SHEET/MATERIALS
Sunshades & Canopies	"Nail-On" Sunshade™	Panel widths up to 108" and depths up to 24" Typically 3/16" thick Aluminum, 12 GA. Cor-Ten® (Rusting Steel)

DESCRIPTION

Our patented "Nail-on" Sunshade™ eliminates the need for a long bracket protruding from the structure but instead utilizes a 'nail-on' continuous attachment much like a 'nail-on' window fin. They are easier to install and waterproof around and because they do not require brackets protruding from the building, our Nail-on Sunshades™ do not interfere with scaffolding placement. Installers love the simplicity of this innovative system.

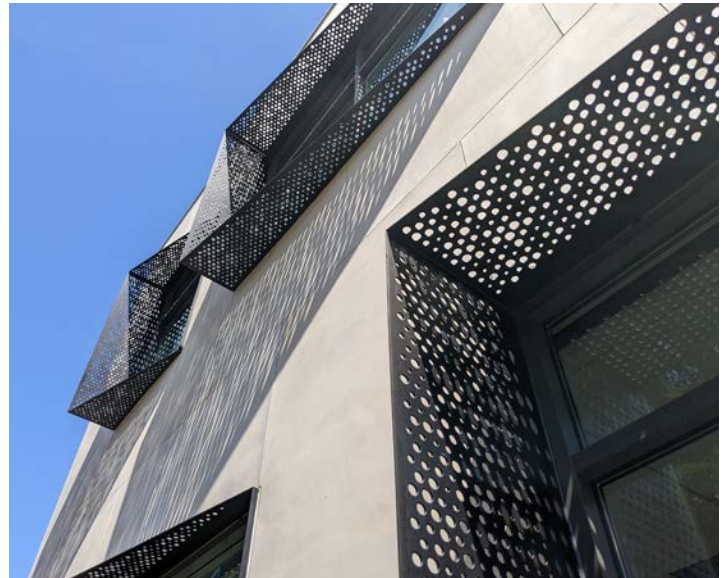
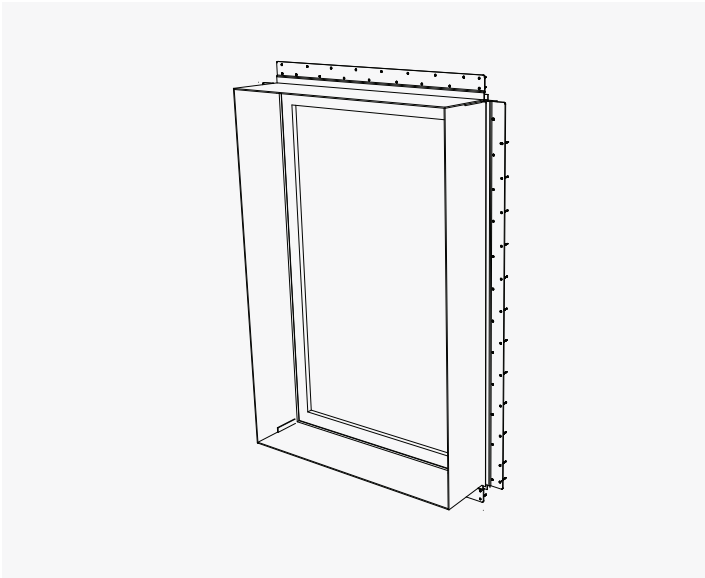
ADVANTAGES

- Works well with scaffolding without having protruding brackets.
- Ease of installation. No field verifying as they are sized to windows.
- Greatly simplifies waterproofing details.
- The offset bracket is designed to sit tight to the window but eliminates bearing on the nailing flange.
- The brackets are quickly installed. They can be mounted on top of the gyp and then screw into typical window framing.

ADDITIONAL APPLICATIONS

- Sun shading for windows in multiple configurations (one to 4 sides) and adding depth to a facade.

Standard 'Nail-On' Sunfin™ System



PRODUCT FAMILY	PRODUCT APPLICATIONS	SHEET/MATERIALS
Sunshades & Canopies	"Nail-On" Sunfins™	Panel widths up to 108" and depths up to 12" Typically 3/16" thick Aluminum, 12 Ga. Cor-Ten™ (Rusting Steel)

DESCRIPTION

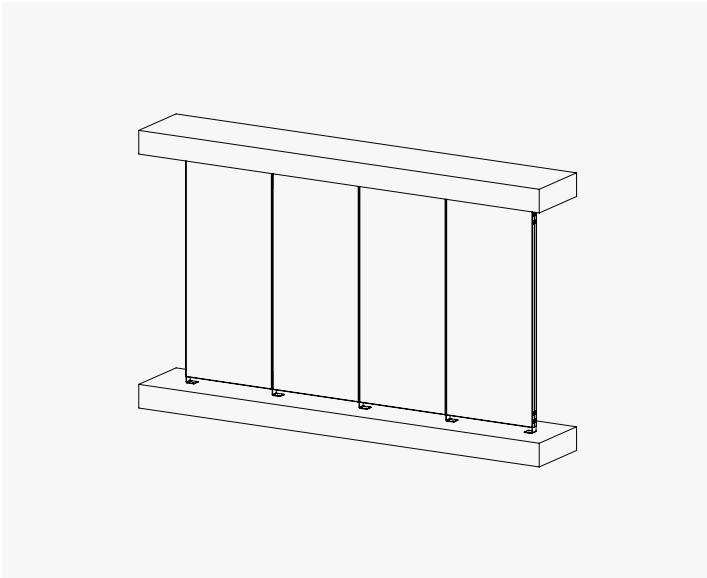
Nail-on Sunfin™ eliminates the need for a separate bracket protruding from the structure but instead utilizes a 'nail-on' continuous attachment much like a 'nail-on' window fin. They are easier to install and waterproof around and because they do not require brackets protruding from the building, our Nail-on Sunfins™ minimally conflict with scaffolding placement. Installers love the simplicity of this innovative system.

ADVANTAGES

- Works well with scaffolding due to the shallow depth.
- Ease of installation. No field verifying as they are sized to windows.
- Greatly simplifies waterproofing details.
- The panels are quickly installed. They can be mounted on top of the gypsum board and then screw into standard window framing.

ADDITIONAL APPLICATIONS

- Sun shading for windows in multiple configurations (one to 4 sides) and adding depth to a facade.



PRODUCT FAMILY	PRODUCT APPLICATIONS	SHEET/MATERIALS
Interior Screen	Interior Screen	Widths to 54" and heights to 138" Typically 3/16" thick Aluminum

DESCRIPTION

Our room partitions provide dramatic branding to your interior space and transform open space into well-defined areas. These versatile partitions can also be used for exterior applications in multi-family residential properties to provide privacy between units. Brackets attach to the floor and soffit.

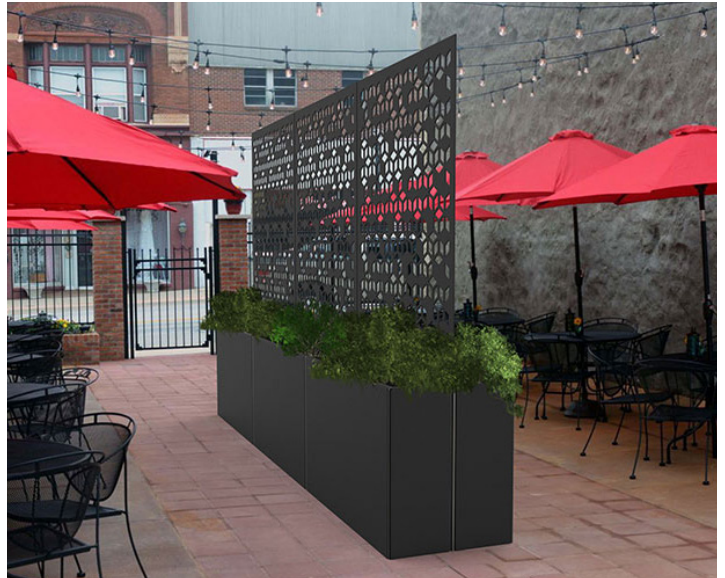
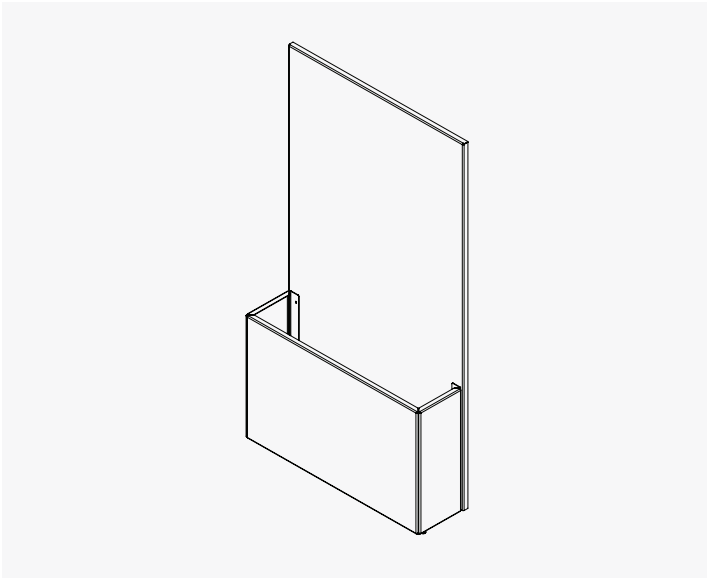
ADVANTAGES

- Adjustable brackets, easy to install, long spans for floor-to-soffit applications.

ADDITIONAL APPLICATIONS

RESIDENTIAL | LOBBIES | RESTAURANTS | OFFICE SPACE

Standard Planter/Divider System



PRODUCT FAMILY	PRODUCT APPLICATIONS	SHEET/MATERIALS
Products	Planter/Divider	Varies Typically 3/16" thick Aluminum, 12 Ga. Cor-Ten™ (Rusting Steel)

DESCRIPTION

Our modular planter system can be configured in unlimited arrangements. Paired with our divider screens, you can create beautiful outdoor and rooftop gardens. Our planter system is sized to be compatible with standard rooftop pedestal and paver systems. Available in painted and anodized aluminum as well as Cor-Ten steel.

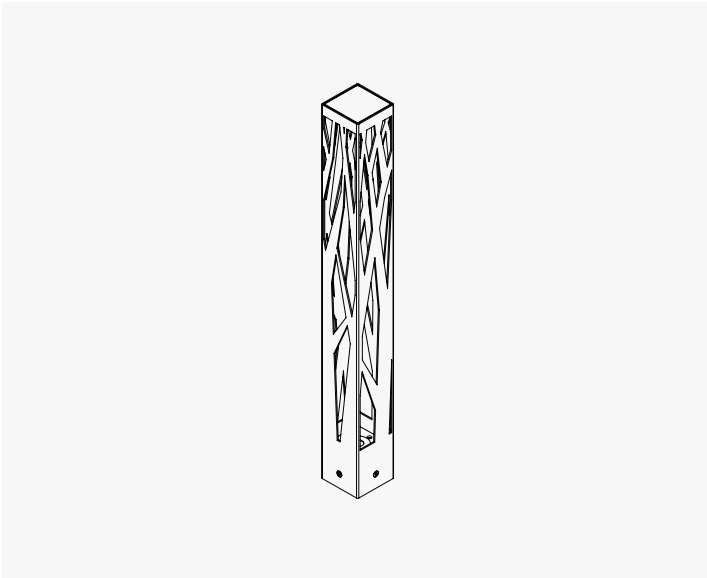
ADVANTAGES

- Works with modular roof pedestal systems: self-ballasted

ADDITIONAL APPLICATIONS

AREA SEPARATORS | VISUAL SCREENING FOR HOTELS | RESIDENTIAL | RESTAURANTS | OUTDOOR SPACES

Standard Bollard Lighting System



PRODUCT FAMILY	PRODUCT APPLICATIONS	SHEET/MATERIALS
Products	Bollard Lighting	Square, rectangular and round shapes to 6" diameter and 12' in height 3/16" and 1/4" thick walls

DESCRIPTION

Our bollard lights are a modern outdoor light that illuminates your pathways with beautiful dappled lighting through the pattern of your choice. We use bright, energy-efficient LED lights set into the base, which sleeves into the bollard neatly.

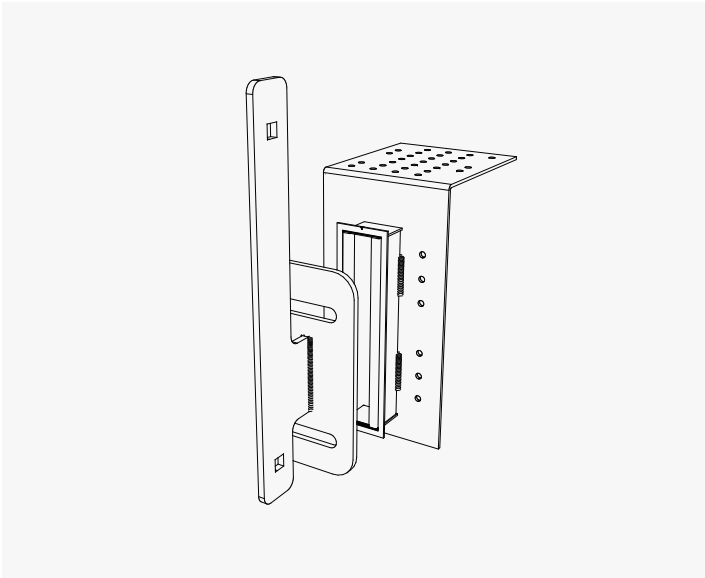
ADVANTAGES

- Infinitely customizable, can provide branding, addresses, room numbers, etc.

ADDITIONAL APPLICATIONS

PATHWAY LIGHTING | LANDSCAPE LIGHTING | WAYFINDING | STREET ADDRESS

Standard Universal Mount™ System



PRODUCT FAMILY	PRODUCT APPLICATIONS	SHEET/MATERIALS
Products	Universal Mount™	Plate: 1/8" stainless steel Stainless Steel Unistrut or Halfen Channel 3/8" Thick Stainless Steel Bracket

DESCRIPTION

The Universal Bracket reduces time spent on installation in the field and alleviates potential waterproofing issues while retaining a wide range of adjust-ability. Installers prefer this system as it makes installation and waterproofing so much faster and easier. They can typically install 2-3 times more balconies per day when the Universal Mount™ is used because it's adjustable and easy to install. Review our installation videos for wood decks, comparing the traditional tie-back installation with our bracket. There is much less coordination, trades involved, and labor time spent in the field when using our Universal Mount™

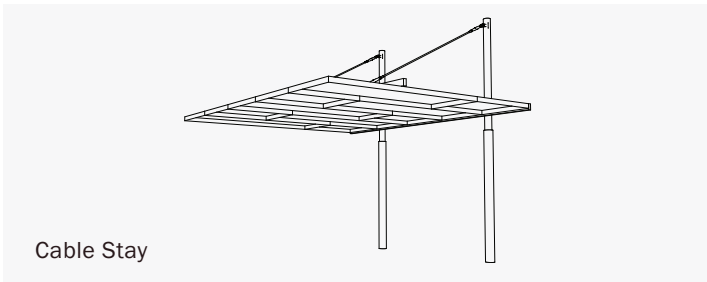
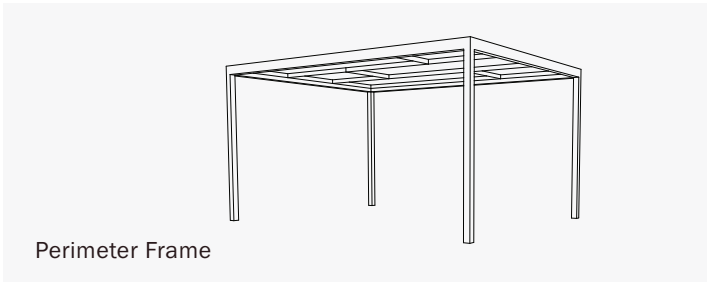
ADVANTAGES

- Field adjust-ability allowing much more tolerance for bracket placement.
- Fewer trade coordination's.
- Much easier to waterproof over.
- Can typically mount to existing framing without requiring additional structure compared to traditional fixed brackets.
- Less costly due to reduction in labor and elimination of costly tie-backs.

ADDITIONAL APPLICATIONS

- Can be utilized with many of our standard products for wood, concrete, and steel applications.

Freestanding Trellis/Canopy Systems



PRODUCT FAMILY	PRODUCT APPLICATIONS	SHEET/MATERIALS
Products	Freestanding Trellis/ Canopies	Steel Structure (By Others) 3/16" Thick Aluminum or 12 Ga. Cor-Ten™ (Rusting Steel)

DESCRIPTION

BÖK Modern's Freestanding Trellis Structures are infill panels with a perimeter frame that utilized staggered panels to achieve long spans without intermediate secondary structure.

ADVANTAGES

- Staggered panels eliminate excess steel structure.
- Can be solid, perforated, or a combination.
- Irregular shapes possible.
- Can be supported by masts and hanger rods for a column-free space.

ADDITIONAL APPLICATIONS

- Outdoor public spaces, bike shelters, bus shelters, carports and entry canopies.